

Research Promotion Incentive Policy

(Approved in the meeting of Central Research Board
held on 25.07.2023)



प्रो. शिवशंकर मिश्र
Prof. Shiv Shankar Mishra
संशोधन विभागाध्यक्ष

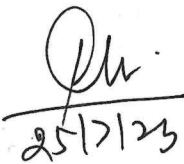
Head, Department of Research
श्री लाल बहादुर शास्त्री राष्ट्रीय संस्कृत विश्वविद्यालय
Shri Lal Bahadur Shastri National Sanskrit University
बी-4, कुतुब सांस्थानिक क्षेत्र, नई दिल्ली-110016
B-4, Qutub Institutional Area, New Delhi-110016



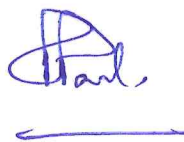
Shri Lal Bahadur Shastri National Sanskrit University

B-4, Qutub Institutional Area, New Delhi, Delhi 110016

सत्यापित
VERIFIED

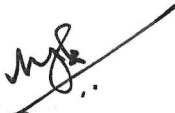


25/7/23



कुलसचिव / Registrar

श्री लाल बहादुर शास्त्री राष्ट्रीय संस्कृत विश्वविद्यालय
Shri Lal Bahadur Shastri National Sanskrit University
बी-4, कुतुब सांस्थानिक क्षेत्र, नई दिल्ली-110016
B-4, Qutub Institutional Area, New Delhi-110016



CONTENT

SN	Description	Page No.
1.	Preamble	3
2.	Objective of Shri Lal Bahadur Shastri National Sanskrit University	3
3.	Powers of SLBSNSU regarding research	3
4.	Concerns of Research Policy Document	3
5.	Objectives of the Research Policy Document	4
6.	The Broad Areas of Research	5
7.	Priorities and Thrust Areas for Research	6
8.	Schools and Departments for Research (Masters/Doctoral/Post-Doctoral Research)	7
9.	Central Research Board	8
10.	Department Research Committee	9
11.	Research Advisory Council	9
12.	Research Advisory Committee	9
13.	Implementation Mechanism of Research Policy	10
14.	Code of Ethics for Research	11
15.	Agreements/MoUs/LoAs	12
16.	Responsibilities of Faculty Members as Research Supervisor	12
17.	Responsibilities of Research Scholars	12
18.	Process and Procedures for Conducting Research leading to a Degree	12

Shiv

प्रो. शिवशंकर मिश्र
Prof. Shiv Shankar Mishra
सोचविभाग अध्यक्ष

Head, Department of Research

श्री लाल बहादुर शास्त्री राष्ट्रीय संस्कृत विश्वविद्यालय
Shri Lal Bahadur Shastri National Sanskrit University
बी-4, कुतुब सांस्थानिक क्षेत्र, नई दिल्ली-110016
B-4, Qutub Institutional Area, New Delhi-110016

Shiv
25/7/23

Shankar

Shiv

Shiv

सत्यापित
VERIFIED

Shiv

Preamble

- According to the preamble of Central Sanskrit University Act 2020, Shri Lal Bahadur Shastri National Sanskrit University, Delhi pursues to establish and to incorporate for quality teaching and research in Sanskrit, and to develop the all-inclusive Sanskrit promotional activities, and to provide for matters connected therewith or incidental thereto. (CSU Act 2020, Preamble, p. 1).
- Over the years, since 1962 started as institute, through its research initiatives in Sanskrit Shastras, Language and allied fields, the SLBSNSU has made consistent contributions to *promotion of Sanskrit Language and Sanskrit Education*. The significant role of SLBSNSU reflects in its research and extension activities aiming at promotion and preservation of highly enriched systems of *Indic knowledge including manuscriptology*.
- Quality research conducted at SLBSNSU resulted in numerous publications of books and journals. These publications are recognized as very advantageous and relevant to access and to disseminate the most ancient knowledge of India.

Objective of Shri Lal Bahadur Shastri National Sanskrit University

According to CSU Act 2020, the objective of SLBSNSU regarding research shall be:

- To disseminate and to access knowledge by providing instructional, research and extension facilities to the promotion of Sanskrit Language and such other branches of learning as it may deem fit.
- To take appropriate measures for promoting innovations in teaching-learning process and inter-disciplinary studies and research; to educate and train manpower for the overall development, promotion, preservation, and research in the field of Sanskrit and Sanskrit traditional subjects. (CSU Act 2020, Para 5, p. 4)

Powers of SLBSNSU regarding research

The University shall have the following powers:

- To provide for instructions in such branches of learning including Sanskrit and Sanskrit traditional subjects, as may be specified in the Statute, or as may be determined by the University, from time to time, and to make provisions for research and advancement and dissemination of knowledge. (CSU Act 2020, Para 6 (1) (i), p. 5)
- To make provision for research and consultancy or advisory services, and for that purpose, to enter into such arrangements with other Universities, Institutions, or bodies, as the University may deem necessary. (CSU Act 2020, Para 6 (1) (i), p. 5)
- To promote inter-facial research by making joint appointments of teaching staff in different Schools and Departments (CSU Act 2020, Para 6 (1) (iii), p. 5)
- To exercise general supervision over the academic policies of the University and to give directions regarding methods of instruction, co-ordination of teaching among the Colleges and the Institutions, evaluation of research and improvement of academic standards. (CSU Act 2020, Para 14 (a), p. 24)
- To form the measures for improvement of standards of teaching, training, and research (CSU Act 2020, Para 5, p. 4)
- To determine the area of excellence of the University and identify the thrust areas for research. (CSU Act 2020, Para 16 (ii), p. 25)

Concerns of Research Policy Document

- The pursuit of excellence and relevance in research at SLBSNSU yields results. Therefore, in order to conduct the research to the highest of standards, the research policy document

सत्यापित
VERIFIED

कुलसचिव / Registrar

श्री लाल बहादुर शास्त्री राष्ट्रीय संस्कृत विश्वविद्यालय
Shri Lal Bahadur Shastri National Sanskrit University
बी-4, कुतुब सांस्थानिक क्षेत्र, नई दिल्ली-110016
B-4, Qutub Institutional Area, New Delhi-110016

31/7/23

Paul

myto

JSBh

offers guidelines on virtuous and righteous research practices.

- The research policy document intends to establish a favorable research culture and ecosystems by forming specialized research groups that meet worldwide standards.
- The document also prioritizes using the research's findings for the good of learning global society.
- The document initiates and fosters a research culture that adheres with academic standards and ethics.
- The document aims at fostering detailed research activities and offer a strategy pertaining the research objectives.
- The document facilitates to implement theoretical knowledge (Prajñāmas) into the outcomes (Pariñāmas), and the document illuminates the paths for the research based on application of theories.
- The document seeks the other government and non-government funding agencies to collaborate and to enhance the research projects.
- The document promotes the research based on Indian Research Methodology.
- The document explores new dimensions of Bharatiya Shastras and promotes the criticism of colonial interpretations of Bharatiya Shastras.

Objectives of the Research Policy Document

- To increase the institutional capacity for planning, budgeting, and controlling of all university research activities at strategic, technical, and operational levels.
- To establish and manage an adequate *research fund to aid in and to facilitate the research projects and initiatives of faculty members and students.*
- To introduce policies, methods, and standards for *allocating funding for research*, establishing awards, and assisting with all other relevant operations.
- To provide a method for properly coordinating all research efforts at the university and to bring them in line with their objectives and visions as well as with goals for international development.
- To introduce and to maintain the university's research agenda, which outlines the preferred areas of emphasis and the top priority for financed research projects.
- To support faculty members in their efforts to integrate research projects into the regular delivery of the curriculum and its enrichment.
- To guide faculty members in the effective integration research projects with the regular curriculum implementation and curriculum enrichment activities.
- To promote interdisciplinary research and establishing modalities for preparing and to undertake joint research projects covering more than one knowledge domain as well as policies for involving external agencies/experts in such projects.
- To identify and to establish linkages *including MoUs/LoAs for long-term relationships with national and international research organizations* for widening the scope of research opportunities and funding options available to the teachers and students at the university.
- To encourage and to facilitate the publication of the research work/projects in reputed academic journals.
- To provide mechanism to ensure that academic staff attain the desired mix of teaching, research, and consultancy outputs so as to achieve the level stated in the university mission.
- To prepare and to implement research quality assurance mechanism for ensuring that all research activities of the University conform to standard quality specifications.
- To develop and to administer rules and procedures to ensure the compliance of all researchers to the research quality assurance framework, the research code and all the applicable rules and regulations.

प्रो. शिवशंकर शर्मा
Prof. Shiv Shankar Sharma
मोघविभागप्रमुख
Head, Department of Research
श्री लाल बहादुर शास्त्री राष्ट्रीय संस्कृत विश्वविद्यालय
Shri Lal Bahadur Shastri National Sanskrit University
बी-४, कुतुब सांस्थानिक क्षेत्र, नई दिल्ली-110016
B-4, Qutub Institutional Area, New Delhi-110016

4

कुलसचिव / Registrar
श्री लाल बहादुर शास्त्री राष्ट्रीय संस्कृत विश्वविद्यालय
Shri Lal Bahadur Shastri National Sanskrit University
बी-४, कुतुब सांस्थानिक क्षेत्र, नई दिल्ली-110016
B-4, Qutub Institutional Area, New Delhi-110016

संशोधित
VERIFIED

The Broad Areas of Research

1. Research Projects

- The provisions regarding “Seed Money” will stimulate competitive research project in crucial areas of national or international importance. The grants of Seed Money will promote innovative ideas, knowledge, and facilitate the start of research projects which will also potentially develop the sources of their own through external funding.
- The infrastructure which includes *facilities, resources and services will be provided by SLBSNSU for research project*. The provisions will be designed to conduct research projects and to foster innovation in the field of Sanskrit and Sanskrit Education.
- Administrative support will be provided by SLBSNSU to facilitate the research incentive and research projects.

2. Research Publications

- The University will promote the *print and online publication* of quality journals in the fields of Sanskrit and other allied disciplines.
- The University will also *financially support* the republication of published rare publications of established scholars and authors.
- The University will stimulate, energies, and encourage the faculty members to publish the *quality research papers in high indexed quality journals*.
- The University will exclusively appreciate, support, and sustain the interdisciplinary and multidisciplinary research publication which possesses the scientific research methodologies, and produces the specific outcomes.

3. Intellectual Property Rights (IPR)

- Under the broad theme ‘Creative India, Innovative India’ accepted by Government of India, the policy will stimulate a dynamic, vibrant, and balanced **intellectual property rights system** in university. The policy document will foster creativity and innovations, and promote entrepreneurship and enhance socio-economic and cultural development, and to focus on enhancing access to Sanskrit Knowledge Traditions and other sectors of vital social, economic, and technological development.
- The University will ensure that intellectual property rights are the legal rights given to researcher over the creations of her/his mind. The researcher will be given the exclusive rights over the use of his/her creation for a certain period of time.
- The University will sustain a critical ecosystem which is critical to foster innovations. Without protection of ideas, research would not reap the full benefits of inventions and would focus less on research and development.

4. Manuscripts Repository

- The Sharing, collecting, purchasing, digitizing, and acknowledging the manuscripts resulting as IPRs and patents - all these pursuits will be performed in SLBSNSU.
- The *preservation and protection of Manuscripts* will be the main concerns as per the Protection Rules.
- The Manuscripts will be *electronically digitalized*, and available for researchers and faculty members on payment mode.
- The manuscripts will be collected and preserved by the fund allocated by university.

5. Research in Different Programmes

- The University is committed to promote the quality research in various programmes offered by university at different levels i.e., at Under-Graduate, Post-Graduate, Doctoral and Post-Doctoral levels *has provision of allocating the portion of amount generated from internal resources*.
- The University provides financial assistance to the research projects, book writing and research paper publication.
- The University invests some amount of money for the promotion of research from the internal resources which have generated by the university itself.

सत्यापित
VERIFIED

कुलसचिव / Registrar

श्री लाल बहादुर शास्त्री राष्ट्रीय संस्कृत विश्वविद्यालय
Shri Lal Bahadur Shastri National Sanskrit University
बी-4, कुतुब सांस्थानिक क्षेत्र, नई दिल्ली-110016
B-4, Qutub Institutional Area, New Delhi-110016



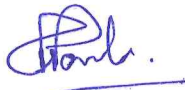
प्रो. शिवशंकर मिश्र
Prof. Shiv Shankar Mishra

शोधविभागाध्यक्ष
Head, Department of Research

श्री लाल बहादुर शास्त्री राष्ट्रीय संस्कृत विश्वविद्यालय
Shri Lal Bahadur Shastri National Sanskrit University

बी-4, कुतुब सांस्थानिक क्षेत्र, नई दिल्ली-110016
B-4, Qutub Institutional Area, New Delhi-110016


25/7/23







- The University have the detailed guidelines for the above-mentioned programmes to ensure the quality in research.
- The guidelines will be prepared as per the directions of UGC and other regulatory bodies.

Priorities and Thrust Areas for Research

- The SLBSNSU will identify the priorities and thrust areas of research in consultation with the respective various institutional committees, and other concerned councils. The priorities and thrust areas of research need to be conducted systematically along with the details of facilities, availability of funding/scholarship/incentives/fellowships and infrastructure available for undertaking research in these areas.
- The SLBSNSU will priorities the research regarding **Research Projects, Publications, Intellectual Property Rights (IPR), and Manuscripts Repository.**
- The following are the priorities, thrust areas and subjects to review from time to time:

1. Manuscripts Editing and Preparation of Critical Editions

- Critical editing under editing principles and rules.
- Critical Review of published and unpublished manuscripts.
- Preparation of critical edition of a single available manuscript.
- Special editions with translation in Sanskrit, Hindi, English and other language.

2. Indian Knowledge Traditions and their Application

- Research on contemporary problems, challenges, and issues in the context of most enriched traditions of Indian Knowledge.
- Some Research related to Indian Knowledge Traditions are expected as Scientific and fundamental research engaging in different areas leading to new theories.
- Research focusing on correlative studies with these concerns and domains of Indian Knowledge Traditions.
- Research dealing with ancient history, archaeology, museology, Vedic agriculture, traditions of medicines, healthcare, and so on are the top priorities of SLBSNSU.
- **Any theme related with other Shastric discipline** - Interdisciplinary and multidisciplinary research on allied branches of Sanskrit Knowledge System.
- **Critical discourse analysis of Sanskrit Language** - Analysis of Sanskrit Language with other Indian and foreign languages which is based on growing interdisciplinary research movement

Information and Communication Technology based Themes and Areas - Computational Linguistics and Traditional Studies, Natural Language Processing, Technological Experiments based Research, i.e., development of technological resources for teaching of Sanskrit,

PS

प्रो. शिवशंकर मिश्रा
Prof. Shiv Shankar Mishra
सोधविभागध्यक्ष

Head, Department of Research

श्री लाल बहादुर शास्त्री राष्ट्रीय संस्कृत विश्वविद्यालय
Shri Lal Bahadur Shastri National Sanskrit University
बी-4, कुतुब सांस्थानिक क्षेत्र, नई दिल्ली-110016
B-4, Qutub Institutional Area, New Delhi-110016

PS
23/7/23

PS

सत्यापित
VERIFIED

6

PS
कुलसचिव / Registrar

श्री लाल बहादुर शास्त्री राष्ट्रीय संस्कृत विश्वविद्यालय
Shri Lal Bahadur Shastri National Sanskrit University
बी-4, कुतुब सांस्थानिक क्षेत्र, नई दिल्ली-110016
B-4, Qutub Institutional Area, New Delhi-110016

PS

PS

Development of Tools, and Software for learning and optimum utilisation of Sanskrit Knowledge System.

3. **Review of Criticism of Indian Knowledge Traditions**

- Review of Indian Shastric Literature.
- Criticism of prior publications and propagations by modern commentators and Scholars.

4. **Historical, Descriptive and Experimental Research**

- The main focus of educational research should be on National Education Policy 2020. The areas for educational research may be accepted as National Curriculum Framework, New Curricula, Pedagogical Experiments, and enhancement of Sanskrit Teaching-Learning Practices, which are directly interconnected with National Education Policy 2020.
- The educational research must deal with new paradigm shifting towards medium of mother language and its impact on teaching-learning practices that also result in new possibilities and innovations in Sanskrit Education.
- The historical educational research should deal with ancient Indian history and educational systems of India. The qualitative research methodology should be adopted to study these educational phenomena.
- The descriptive survey-based research focused the trends, challenges, problems, and issues of Sanskrit and Sanskrit Education to understand the cross-cutting socio-cultural aspects.
- The experimental educational research should deal with teaching methodologies, especially the Indic methods to teach humanities and science subjects. Similarly, some studies to develop Indian research methodologies should be encouraged, recommended, and endorsed.

Schools and Departments for Research (Masters/Doctoral/Post-Doctoral Research)

1. **School of Veda-Vedang (Deda, Paurohitya, Dharmshastra, Vyakarana, Jyotish and Vastushastra**
2. **School of Darshan (Nyaya, Shankhya Yoga, Jain Darshan, Yoga, Sarva Darshan, Mimansa, Vishista Advait Vedant, Advait Vedant)**
3. **School of Sahitya & Sanskrit (Sahitya, Puranetihas, Prakrit)**
4. **School of Adhunik Vishya (Manviki, Adhunik Gyan, Research, Hindu Studies)**
5. **School of Education (Shikshashastra)**
6. **School of Puran Vidya**

In specific case of research, the school other than university may be approved with collaborating institutions based on MoUs.

प्रो. शिवशंकर मिश्र
Prof. Shiv Shankar Mishra

शोधविभागाध्यक्ष
Head, Department of Research

श्री लाल बहादुर शास्त्री राष्ट्रीय संस्कृत विश्वविद्यालय
Shri Lal Bahadur Shastri National Sanskrit University

बी-4, कुतुब सांस्थानिक क्षेत्र, नई दिल्ली-110016
B-4, Qutub Institutional Area, New Delhi-110016

21/7/23

सत्यापित
VERIFIED

कुलसचिव / Registrar

श्री लाल बहादुर शास्त्री राष्ट्रीय संस्कृत विश्वविद्यालय
Shri Lal Bahadur Shastri National Sanskrit University
बी-4, कुतुब सांस्थानिक क्षेत्र, नई दिल्ली-110016
B-4, Qutub Institutional Area, New Delhi-110016

Central Research Board

The research proposal submitted by each researcher will be supervised, test of the researcher's presentation through interview and recommendation of registration for research work will be done by the research team, which will be constituted of the following members:

i.	The Vice-Chancellor	Chairman
ii.	Dean (Academic)	Member
iii.	Dean of all Schools	Member
iv.	Head of Departments	Member
v.	In addition to the Dean & HOD, other members (not more 5 members)	Member
vi.	Nominated 4 members of other subjects by the Vice-Chancellor	Member
vii.	Nominated External Experts from other Universities/Institutions Member by the Vice-Chancellor	Member
viii.	Head of Department (Research)	Member, Secretary

Roles and responsibilities of Central Research Board

- To prepare research policy documents of the University.
- To prepare scope of research, which will include major & minor projects, consultancy or any other research activities as may be assigned by the Academic Council.
- To review the research proposals and finalize the topic of research.
- To prepare a perspective of research and major thrust areas for research, if any, in the disciplines under its purview.
- To evaluate institutional research programmes for funding by the University or by national/international agencies.
- To conduct and promote inter-disciplinary and multi-disciplinary research works/ programmes and avail/arrange funding thereof at University/National/International level.
- To review the current status of research in each department and also evaluate any kind of funding and progress thereof in the course of research and critically examine the progress from time to time.
- To indicate the priority areas of research in the departments particularly with reference to the role and responsibility of the University and considering the facilities available in the University and also create facilities wherever necessary in keeping with the major thrust areas accepted for the concerned Departments and individual interest of the members of the faculty.
- To perform such other functions as may be assigned to it by the Academic Council.

In case the progress of the research scholar is unsatisfactory, the Research Board shall record the reasons for the same and suggest corrective measures. If, the research scholar fails to implement these corrective measures, the Research Board may recommend specific reasons for cancellation of the registration of the research scholar.

Provisions for Central Research Board

- The Central Research Board shall meet regularly at least twice a year.
- The members shall form quorum for a meeting of the Central Research Board.
- To perform such all other duties and functions as may be prescribed by the Regulations.
- In any sort of discrepancies or issues with these clauses above, the Vice Chancellor shall have the power to resolve the matters.

सत्यापित
VERIFIED

प्रो. शिवशंकर मिश्र
Prof. Shiv Shankar Mishra
संयोजक/सचिव

Head, Department of Research

श्री लाल बहादुर शास्त्री राष्ट्रीय संस्कृत विश्वविद्यालय
Shri Lal Bahadur Shastri National Sanskrit University
बी-4, कुतुब सांस्थानिक क्षेत्र, नई दिल्ली-110016
B-4, Qutub Institutional Area, New Delhi-110016

कुलसचिव / Registrar
श्री लाल बहादुर शास्त्री राष्ट्रीय संस्कृत विश्वविद्यालय
Shri Lal Bahadur Shastri National Sanskrit University
बी-4, कुतुब सांस्थानिक क्षेत्र, नई दिल्ली-110016
B-4, Qutub Institutional Area, New Delhi-110016

Department Research Committee (DRC)

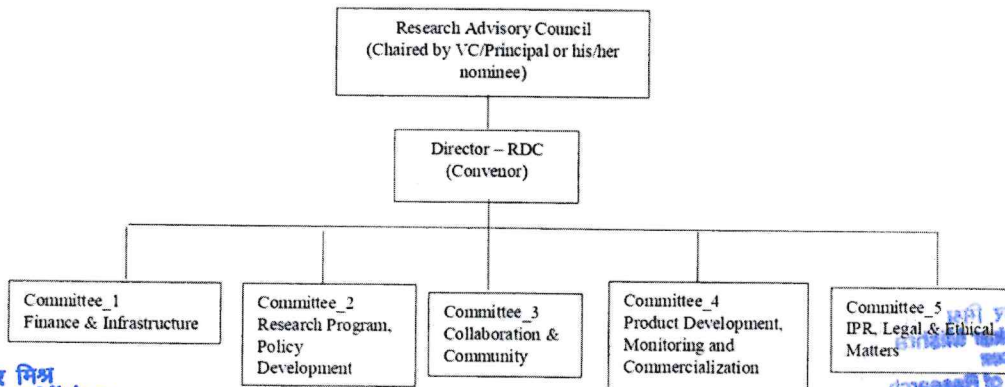
In each Department of the University, academic matters related to the Ph.D programme shall be supervised by the Department Research Committee consisting of the following members:

- i. Head of the Department: Chairperson (ex-officio)
- ii. All the Professors of the Department, (ex-officio)
- iii. Associate Professors in the Department, subject to a maximum of two, by rotation according to the seniority;
- iv. Two Assistant Professor in the Department, qualified to be Research (Ph.D) Supervisor (s), by rotation to the seniority;
- v. One external expert to be called by the Head of Department out of the panel drawn by the BOS.

Where a department has a strength of less than 10 teachers, all faculty members eligible to be research (Ph.D). Supervisors shall be members of the DRC. The term of the members of DRC, except the ex-officio members shall be for two years. At least, 50% of the members shall be required to be present in the meeting to form the quorum with the presence of the Chairman or his/her representative as mandatory. Where no teacher in the department is eligible to be the Head, the Teacher-In-Charge, if eligible to be Research (Ph.D) Supervisor, shall convene the meetings of the DRC, failing which the members of the DRC may elect one of the members.

Research Advisory Council

- As per the document of UGC regarding Research & Development, the Research Advisory Council is constituted chaired by Vice Chancellor, which is equivalent to Central Research Board.
- Whereas Research & Development Cell is to be constituted having following committees:



Handwritten signature

प्रो. शिवशंकर मिश्रा
Prof. Shiv Shankar Mishra
संस्थाध्यक्ष
Head, Department of Research
श्री लाल बहादुर शास्त्री राष्ट्रीय संस्कृत विश्वविद्यालय
Shri Lal Bahadur Shastri National Sanskrit University
बी-४, कुतुब सांस्थानिक क्षेत्र, नई दिल्ली-110016
B-4, Qutub Institutional Area, New Delhi-110016

Research Advisory Committee

There shall be Research Advisory Committee or an equivalent body for similar purpose for each Ph.D scholar. The research supervisor of the scholar shall be the convenor of this Committee. This committee shall have the following responsibilities:

Handwritten signature
25/1/23

Handwritten signature

Handwritten signature

Handwritten signature

Handwritten signature
कुलसचिव / Registrar
श्री लाल बहादुर शास्त्री राष्ट्रीय संस्कृत विश्वविद्यालय
Shri Lal Bahadur Shastri National Sanskrit University
बी-४, कुतुब सांस्थानिक क्षेत्र, नई दिल्ली-110016
B-4, Qutub Institutional Area, New Delhi-110016

सत्यापित
VERIFIED

- (i) To review the research proposal and finalize the topic of research.
- (ii) To guide the research scholar to develop the study design and methodology of research and identify courses that he/she have to do.
- (iii) To periodically review and assist in the program of the research work of the research scholars.
- (iv) A research scholar shall appear before research advisory committee once in six months to make a presentation of progress of his/her work for evaluation and further guidance. The six monthly progress report shall be submitted by the research advisory committee to the university with a copy to the research scholar.
- (v) In case the progress of the research scholar is unsatisfactory, the research advisory committee shall record the reason for the same and suggest corrective measures. If the research scholars fail to implement these corrective measures, the research advisory committee may recommended with specific reasons for cancellation of the registration of the research scholar.

Research Advisory Committee (RAC) for Vidyavaridhi (Ph.D.)

Constitution of the Research Advisory Committee shall consist of the following members at Headquarter and Campus/affiliated institute level:

- Supervisor (Convener)
- One member to be nominated by Head/TIC (Member)
(Out of the panel of three names to be proposed by the convener)
- One member to be nominated by Dean of concerned school/ Member Director Research (Out of the panel of three names to be proposed by the convener) (Member)

Implementation Mechanism of Research Policy

The Central Research Board of the University shall be responsible for implementing this research policy document by working closely with the university management, and other committees at various levels. The Head of Research will determine the implementation of the policy document. There are some mechanisms to implement the policy as following:

- To facilitate the faculty members in undertaking research and to work with the university management to set up a research fund for providing seed money.
- To collaborate with institutions working in the field of Indian Knowledge Heritage/ Traditions/System.
- To re-project the published and established research work as per contemporary needs of global knowledge society.
- To seek and attain the guidance, support and supervision of scholars though not belonging to any disciplinary field of education yet possessing the wealth of knowledge by lifelong practices.
- To interpret and establish the original meaning of Shastras and their knowledge, rectifying and criticising the present misinterpretation of the same done by the western scholars and historians or the eastern scholars and historians with colonial approach.
- To provide research facilities in terms of laboratory equipment, research journals and research incentives etc. required by the faculty members.
- To encourage and to promote a research culture (e.g., teaching workload remission, opportunities for attending conferences etc.).
- To provide the academics with the research facilities they need, such as the lab tools, research publications, and research incentives, etc.



प्रो. शिवशंकर मिश्र
Prof. Shiv Shankar Mishra
संशोधन विभाग अध्यक्ष

Head, Department of Research

श्री लाल बहादुर शास्त्री राष्ट्रीय संस्कृत विश्वविद्यालय
Shri Lal Bahadur Shastri National Sanskrit University
बी-४, कुतुब सांस्थानिक क्षेत्र, नई दिल्ली-110016
B-4, Qutub Institutional Area, New Delhi-110016


25/7/23



10





सत्यापित
VERIFIED



कुलसचिव / Registrar
श्री लाल बहादुर शास्त्री राष्ट्रीय संस्कृत विश्वविद्यालय
Shri Lal Bahadur Shastri National Sanskrit University
बी-४, कुतुब सांस्थानिक क्षेत्र, नई दिल्ली-110016
B-4, Qutub Institutional Area, New Delhi-110016

- To motivate the faculty to conduct research through partnering with other research organizations/industry.
- To establish appropriate methods for recognising research that has served as a guide.
- To facilitate the development of certain research units or centres by funding organisations or universities.
- To encourage a research culture in university through organising workshops, training sessions, and awareness-raising campaigns.
- To create budgets to help students with their research assignments.

Code of Ethics for Research

- All students pursuing research in SLBSNSU are expected to maintain high standards of integrity, honesty, and professionalism in respect of all the work undertaken by them.
- SLBSNSU follows the UGC regulations regarding plagiarism and malpractice in research as vividly mentioned in Code of Ethics to check Malpractices and Plagiarism.
- Before submitting the research work for Shikshacharya (M.Ed.)/Vidyavaridhi (Ph.D.)/Vidyavachaspati (D.Litt.), the research work will be checked by concerned professional for plagiarism and other malpractices. Regarding thesis submission, each student can avail the facility in the campuses for plagiarism thorough software as central government funded and recommended initiative.
- **Specific Conditions for Review** – improper research methodology, grammatical errors, lack of explanation/description, improper citation and referencing etc. and as per directions provided by Research Advisory Committee. **Specific Conditions of Rejection** – violation of code of ethics, Malpractices and Plagiarism, Reproduction of previous research work, Fabrication and Falsification etc. and as per directions provided by Research Advisory Committee.

Research Misconduct

- It can be defined as any breach of the Code of Practice for Research. Research misconduct may be defined as fabrication, falsification, or plagiarism in proposing, performing, or reviewing research, or in reporting research results.
- **Fabrication** means making up data or results and recording or reporting them.
- **Falsification** means manipulating research materials, equipment or processes or changing or omitting data or results such that the research is not accurately represented in the research record.
- **Plagiarism** means the practice of taking someone else's work or idea and passing them as one's own.
- Research Misconduct does not include unintentional error or professional differences in interpretation or judgment of data. For the avoidance of doubt, misconduct in research includes acts of omission as well as acts of commission.

Anti-Plagiarism Policy:

- The University Grants Commission, New Delhi has published a draft regarding promotion of academic integrity and prevention of plagiarism in higher educational institutions regulations 2022. In view of the same, SLBSNSU frames the policy for prevention of plagiarism. The research work shall be verified through the anti-plagiarism software tool "Drillbit" as prescribed by the university. It is the responsibility of all research students, research guides, the faculty members, and staff of this university to read and understand the policy on plagiarism as vividly mentioned in Code of Ethics to check Malpractices and Plagiarism.

[Handwritten signature]

प्रो. शिवशंकर मिश्र
Prof. Shiv Shankar Mishra
सोधविभागप्रमुख
Head, Department of Research

श्री लाल बहादुर शास्त्री राष्ट्रीय संस्कृत विश्वविद्यालय
Shri Lal Bahadur Shastri National Sanskrit University
बी-४, कुतुब संस्थानिक क्षेत्र, नई दिल्ली-110016
B-4, Qutub Institutional Area, New Delhi-110016

[Handwritten signature]
29/1/23

[Handwritten signature]

11

[Handwritten signature]

[Handwritten signature]

सत्यापित
VERIFIED

[Handwritten signature]
कुलसचिव / Registrar

श्री लाल बहादुर शास्त्री राष्ट्रीय संस्कृत विश्वविद्यालय
Shri Lal Bahadur Shastri National Sanskrit University
बी-४, कुतुब संस्थानिक क्षेत्र, नई दिल्ली-110016
B-4, Qutub Institutional Area, New Delhi-110016

Agreements/MoUs/LoAs

- By entering into research-initiated Memorandum of Understanding (MoU) and Letter of Authorization (LoA) with central and state universities, other Higher Education Institutions, Research Institutes, and research councils of India and abroad, SLBSNSU will create an ease of doing collaborative understanding to promote and propagate the Sanskrit Shastras and Language.
- SLBSNSU will initiate the persuasion for MoU and LoA with other central and state universities, other Higher Education Institutions, Research Institutes, and research councils.
- All MoU/LoAs signed with other universities, institutes and educational institutions will adhere to the vision, mission, and objectives of SLBSNSU.

Responsibilities of Faculty Members as Research Supervisor

- To carry out SLBSNSU's research policies and programmes effectively, faculty members along with their research scholars will be guaranteed certain freedoms. Faculty members have the right to academic freedom in the pursuit and support of research as it positively accelerate the innovation, research and development.
- All faculty members of the SLBSNSU have the right to perform the experiments, surveys, contact sessions, external consulting activities, meetings, and collaborative activities as per the recommendations of Research Advisory Committee. It's important that all faculty members adhere to this research policy.
- Faculty members must be aware of their obligations to staff and students working as part of the research team. It is particularly important that at least annually, each faculty member should review the progress and present status of own research work.
- On an individual level, the best interests of each faculty member and student should be of particular concern. The SLBSNSU is committed to demonstrate support and appreciation for its faculty members and research scholars.

Responsibilities of Research Scholars

- All research scholars will be committed towards the Vision and Missions of SLBSNSU which primarily deals with promotion and propagation of Sanskrit Language, Literature and Education in the light of Indian Knowledge System.
- All researchers must be attentive about the quality publication of Minimum two research papers which should be published in UGC CARE/listed Journals, Refereed or Peer Reviewed Journals.

Process and Procedures for Conducting Research leading to a degree

The processes and procedures regarding research at every level in SLBSNSU will be regulated as per the guidelines and regulations of UGC and further as per the directions of Higher Education Commission of India. All the aspects related to research including research policy, qualifications of research supervisor and co-supervisor, duration of research work, governing board and committees of research, curriculum and course work for research, roles and responsibilities of officers associated with research work, rules and guidelines for selecting and conducting a research work, etc. are the subjects to modify, to come into effect and to repeal, as per the latest rules and regulations of UGC, and other regulating bodies.

Course Works

- Course work will be mandatory and available as semester mode twice in a concerned year. A research scholar can opt according to his/her socio-educational situations.
- For the 2nd Ph.D. Applicant having previous research with course work as per the UGC Rules and Regulations, there is relaxation from Course Work. Such research



प्रो. शिवशंकर मिश्रा
Prof. Shiv Shankar Mishra
शोधविभागाध्यक्ष

Head, Department of Research
लाल बहादुर शास्त्री राष्ट्रीय संस्कृत विश्वविद्यालय
Lal Bahadur Shastri National Sanskrit University
-४, कुतुब सांस्थानिक क्षेत्र, नई दिल्ली-110016
Qutub Institutional Area, New Delhi-110016

सत्यापित
VERIFIED


85/1/13









कुलसचिव / Registrar
श्री लाल बहादुर शास्त्री राष्ट्रीय संस्कृत विश्वविद्यालय
Shri Lal Bahadur Shastri National Sanskrit University
बी-4, कुतुब सांस्थानिक क्षेत्र, नई दिल्ली-110016
B-4, Qutub Institutional Area, New Delhi-110016

scholar will complete a set of reading and specific assignments given by the Research Advisory Committee.

- Candidates already holding M.Phil. degree and admitted to the Ph.D. programme, or those who have already completed the course work in M.Phil. and have been permitted to proceed to the Ph.D. in an integrated course, may be exempted by the University from the Ph.D. course work.

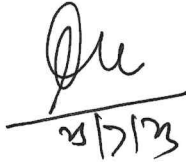
The University offers the course work in two ways, that is either conventional mode or reading/practice mode. Only a researcher doing an interdisciplinary and multidisciplinary research can be allowed for reading/practice mode of course work on recommendations of Research Advisory Committee and with the approval of Vice Chancellor of SLBSNSU.


- Minimum number of the credit requirement for the course work under Ph.D. programme should be at least 12 credits and a maximum of 16 credits.
- A research scholar will apply first for provisional admission. First six months are scheduled to course work, then next six months are for the following aspects regarding to research proposal – Purposes/Objectives of Research, Area/Theme of Research, Review of Related Literature, Identification of Research Problem, and Research Proposal. After one year, the progress of a research scholar will be assessed by the Research Advisory Committee. On the recommendations of Research Advisory Committee, admission will be confirmed.


Medium of Research Thesis

- *The medium of the research work will be Sanskrit, which can be typed only in Unicode fonts (Mangal/Aparajita/Kokila) and in Devanagari script.*
- Use of Simple Standard Sanskrit is advised.
- For the subject matter like interdisciplinary and multidisciplinary areas, *Ph.D thesis can be also submitted in other medium of languages (Hindi, English)*

Notwithstanding anything contained in the research policy document, the Vice Chancellor may take such measures as may be necessary for removal of difficulties and to resolve any other extra ordinary issues.


28/7/23



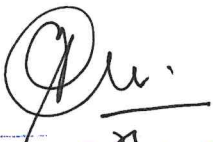


सत्यापित
VERIFIED





कुलसचिव / Registrar
श्री लाल बहादुर शास्त्री राष्ट्रीय संस्कृत विश्वविद्यालय
Shri Lal Bahadur Shastri National Sanskrit University
बी-4, कुतुब सांस्थानिक क्षेत्र, नई दिल्ली-110016
B-4, Qutub Institutional Area, New Delhi-110016



प्रो. शिवशंकर मिश्र
Prof. Shiv Shankar Mishra
शोधविभागाध्यक्ष
Head, Department of Research

श्री लाल बहादुर शास्त्री राष्ट्रीय संस्कृत विश्वविद्यालय
Shri Lal Bahadur Shastri National Sanskrit University
बी-4, कुतुब सांस्थानिक क्षेत्र, नई दिल्ली-110016
B-4, Qutub Institutional Area, New Delhi-110016